

Wireless External Sounder Quick Start Guide

English

1 Appearance

1. Strobe Light
2. Water-Proof Transparency Cover
3. Tamper Switch
4. Buzzer
5. Battery Connector
6. Power Switch
7. 12 VDC Power Terminal
8. Power Cable Knock Out
9. Gradienter
10. Indicator

2 Power On

Battery Power
12 VDC Power

4 Installation

★ Check signal strength.

Note: for 12 VDC power supply, route the cables before install on.

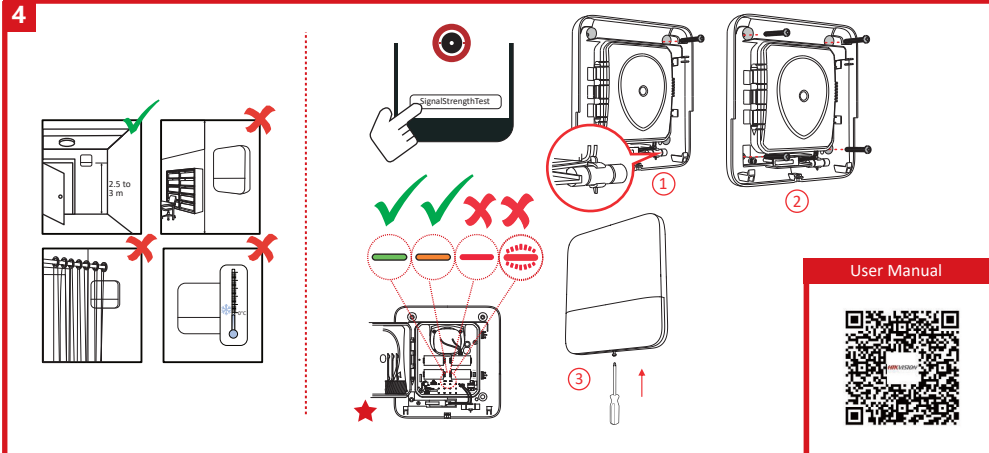
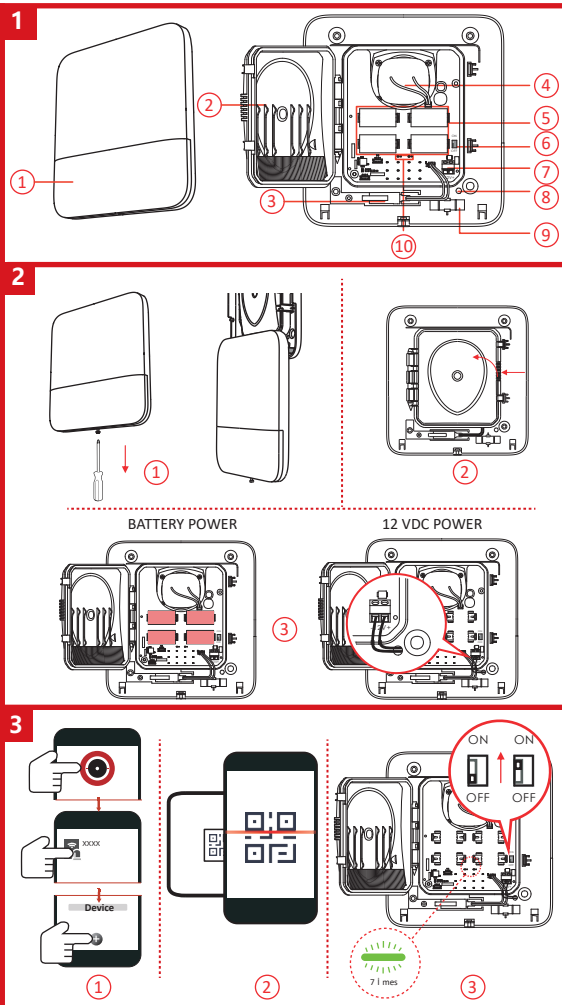
User Manual

Scan the QR code for more information and operation help.

Specification

| | |
|------------|--------------------------------------------------------------------------------------------------------------------------------------------------|
| Model | DS-PS1-E-WB DS-PS1-E-WB(LHK) |
| RF | Frequency: 433 MHz Method: Two-way communication |
| Indication | Indicator: Red/Green |
| | Strobe light: Red/Blue (white on the board) |
| Power | Power: Battery (default power supply method) or 12 VDC |
| | Consumption: Quiescent Current: 40 uA Battery: Max. 3 V/A (alerts in volume level 3) 12 VDC: Max. 12 V/1.3 A (alerts in volume level 3) |
| | Low Battery Cut Off: 2.85 V Voltage Range: Fully charged (new) to 2.45 VDC (battery) |
| Interface | Battery lifespan: 4 CR123A, 3 years in work status (triggered every two weeks and alerting 90 s for each trigger (ng)) |
| | Power switch: Power switch |
| Buzzer | Tamper switch: Front and rear tamper-proof |
| | Piezo Decibel: 110 db Max Sound Duration: 15 min (900 s) |
| General | Operation Temperature: -15 °C to 55 °C (-13 °F to 140 °F) |
| | Operational Humidity: 10% to 90% |
| | Material: PC+ABS |
| | Dimension (W × H × D): 190 × 200 × 47.3 mm (7.48" × 7.87" × 1.86") Weight: 106.5 g Preset on Level: IP65 Install on: Wallmounting |

UD20458B-H



English

INSTALLATION CAUTION

The additional force shall be equal to three times the weight of the equipment but not less than 50N. The equipment and its associated mounting means shall remain secure during the installation. After the installation, the equipment, including any associated mounting plate, shall not be damaged.

Español

PRECAUCIONES DE INSTALACIÓN

La fuerza adicional deberá ser equivalente a tres veces el peso del equipo, pero no inferior a 50N. El equipo y los componentes asociados de montaje permanecerán seguros durante la instalación. Tras la instalación, no se debe dañar el equipo ni tampoco cualquier elemento asociado.

Português (Brasil)

CUIDADOS NA INSTALAÇÃO

A força adicional deverá ser igual a três vezes o peso do equipamento, mas não inferior a 50N. O equipamento e seus recursos de montagem associados devem permanecer seguros durante a instalação. Após a instalação, o equipamento, incluindo qualquer peça de montagem associada, não poderá ser danificado.

Slovenščina

SVARILGOLEDE NAMESTITVE

Dodatna sila mora biti enaka trikratni teži opreme, vendar ne manjša od 50 N. Oprema in njena priložena oprema morata ostati varna med namestitvijo. Po končan namestitvi, oprema, vključno s priloženo opremo, ne sme biti poškodovana.

Srpski

UPREZORENIA O INSTALACIJI

Dodatna sila mora biti jednaka triputnom težini opreme, ali ne manja od 50N. Oprema i njena priložena oprema moraju ostati sigurni tokom instalacije. Nakon instalacije, oprema, uključujući bilo koju priloženu opremu, ne može biti oštećena.

Hebrew

איתור חלקים: איתור חלקים וזיהוי כמותם לפני שיש להשתמש בחלקים. איתור חלקים: איתור חלקים וזיהוי כמותם לפני שיש להשתמש בחלקים. איתור חלקים: איתור חלקים וזיהוי כמותם לפני שיש להשתמש בחלקים.

Türkçe

KURULUM UYARISI

Ek kuvvet, ekipman ağırlığının üç katı olmalıdır, ancak 50N'den az olmamalıdır. Ekipman ve bağlı montaj araçları ve aksesuarları kurulum sırasında korunmalıdır. Kurulum tamamlandıktan sonra ekipman ve aksesuarları zarar görmemelidir.

فارسی

توجه: هنگام نصب، نیروی اضافی باید سه برابر وزن تجهیزات باشد، اما نباید کمتر از 50 نیوتن باشد. تجهیزات و اجزای مرتبط آن در حین نصب باید سالم بمانند. پس از نصب، تجهیزات، از جمله هر قطعه مرتبطی، نباید آسیب ببیند.